

大窩西支路近泰亨行人天橋的臨時交通管制措施

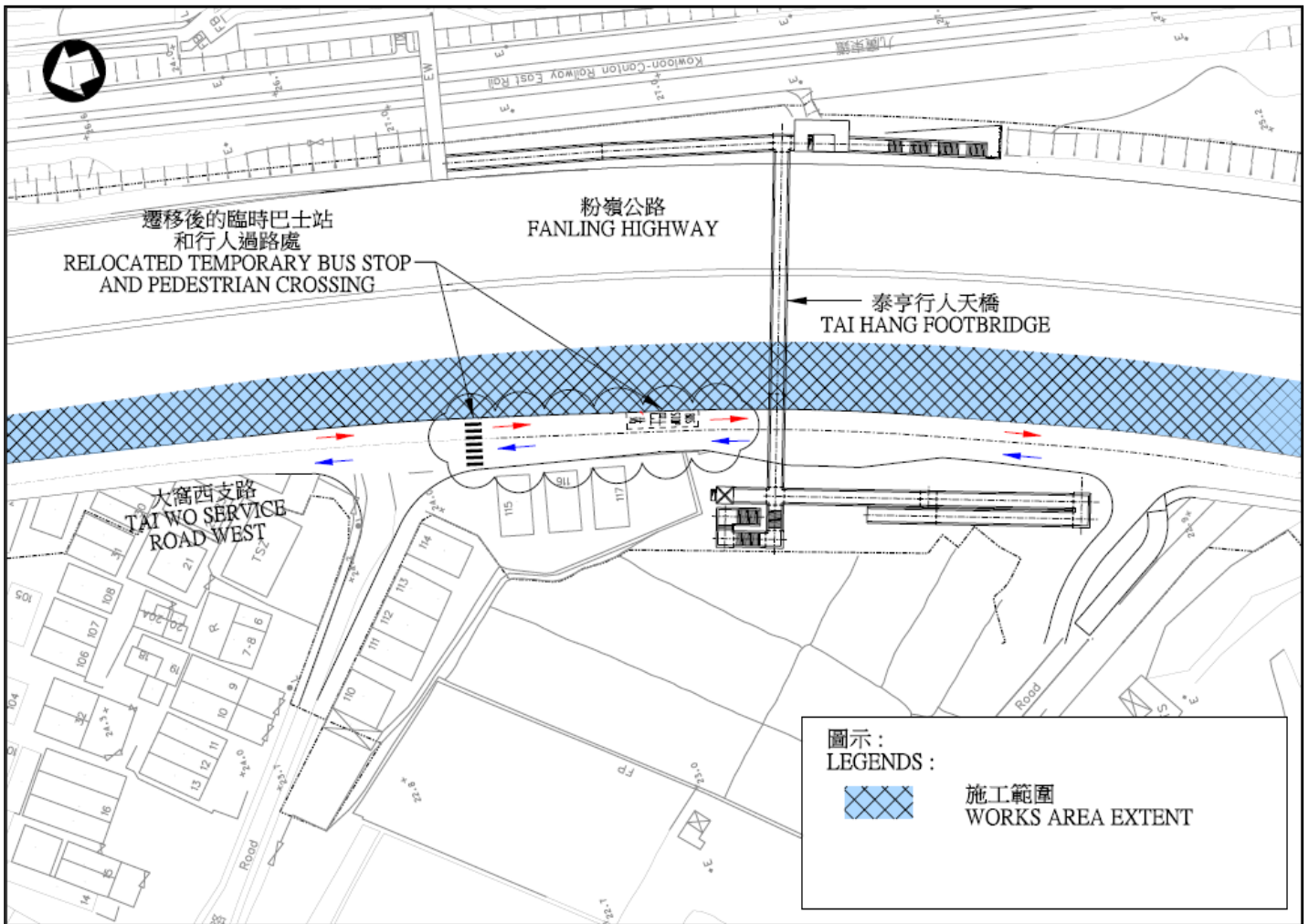
Temporary Traffic Arrangement at Tai Wo Service Road West near Tai Hang Footbridge

為配合近泰亨行人天橋的隔音屏之建造工程，現有的大窩西支路南行近泰亨行人天橋的臨時巴士站和相關行人過路處將會於 2019 年 3 月 28 日重置至原有位置，而現有分隔大窩西支路路段南行與北行之間的臨時交通措施亦會於同日起移除。

現場會設置適當的臨時交通標誌指示各道路使用者，駕駛人士請遵照現場指示，並小心駕駛。我們為此工程將造成的不便之處，謹此致歉。

To facilitate construction of noise barriers near Tai Hang Footbridge, the current temporary bus stop and the associated pedestrian crossing near Tai Hang Footbridge at Tai Wo Service Road West southbound will be relocated to the original location. The temporary traffic arrangement separating Tai Wo Service Road West northbound and southbound will also be removed.

Appropriate temporary traffic aids will be erected on site. Motorists are advised to follow the instructions on site and drive in utmost care. We are sorry for any inconvenience caused.



路政署將密切留意交通情況並採取必要措施，務求將交通影響減至最低。如對上述交通安排有任何查詢，請致電二十四小時熱線：8208 2230。

Highways Department will closely monitor the traffic conditions and implement any necessary measures to ensure the traffic impacts are kept to a minimum. Should you have any enquiries, please call the 24-hour hotline: 8208 2230.