

大窩西支路近九龍坑行車橋的臨時交通管制措施

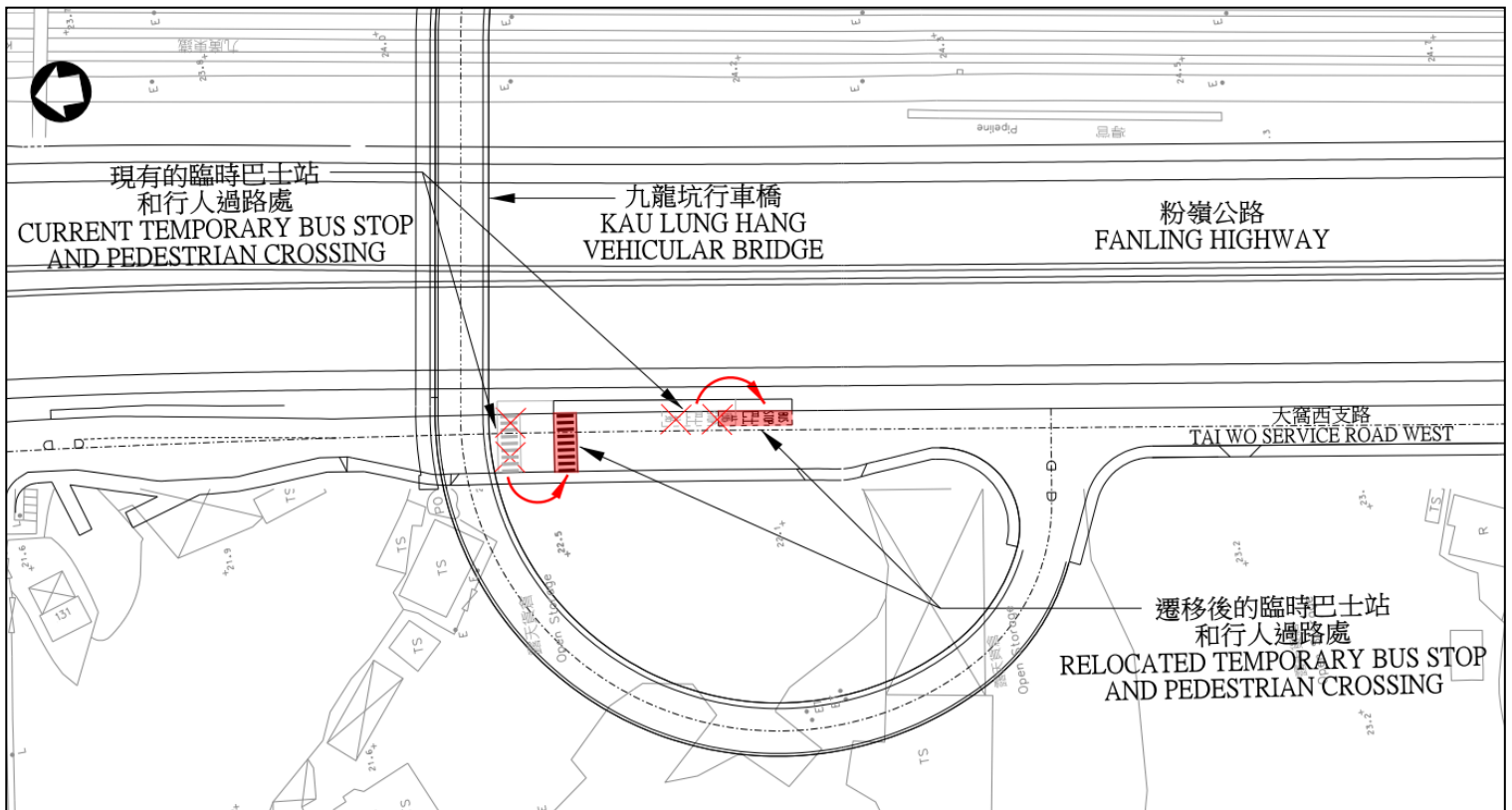
Temporary Traffic Arrangement at Tai Wo Service Road West near Kau Lung Hang Vehicular Bridge

為配合位於大窩西支路近九龍坑行車橋的隔音屏障的建造工程，現有的大窩西支路南行近九龍坑行車橋的臨時巴士站和行人過路處將於 2018 年 9 月 6 日起向南遷移約 10 米。

有關地點將設置適當的臨時交通輔助設施，駕駛人士請遵照現場指示，並小心駕駛。對於施工造成的不便，我們深表歉意。

To facilitate the construction of noise barriers at Tai Wo Service Road West near Kau Lung Hang Vehicular Bridge, the current temporary bus stop and pedestrian crossing near Kau Lung Hang Vehicular Bridge at Tai Wo Service Road West southbound will be moved southward by approximate 10m starting from 6 September 2018.

Appropriate temporary traffic aids will be erected on site. Motorists are advised to follow the instructions on site and drive in utmost care. We are sorry for any inconvenience caused.



路政署將密切留意交通情況並採取必要措施，務求將交通影響減至最低。如對上述交通安排有任何查詢，請致電二十四小時熱線：8208 2230。

Highways Department will closely monitor the traffic conditions and implement any necessary measures to ensure the traffic impacts are kept to a minimum. Should you have any enquiries, please call the 24-hour hotline: 8208 2230.