

大窩西支路近泰亨灰沙圍的臨時交通管制措施

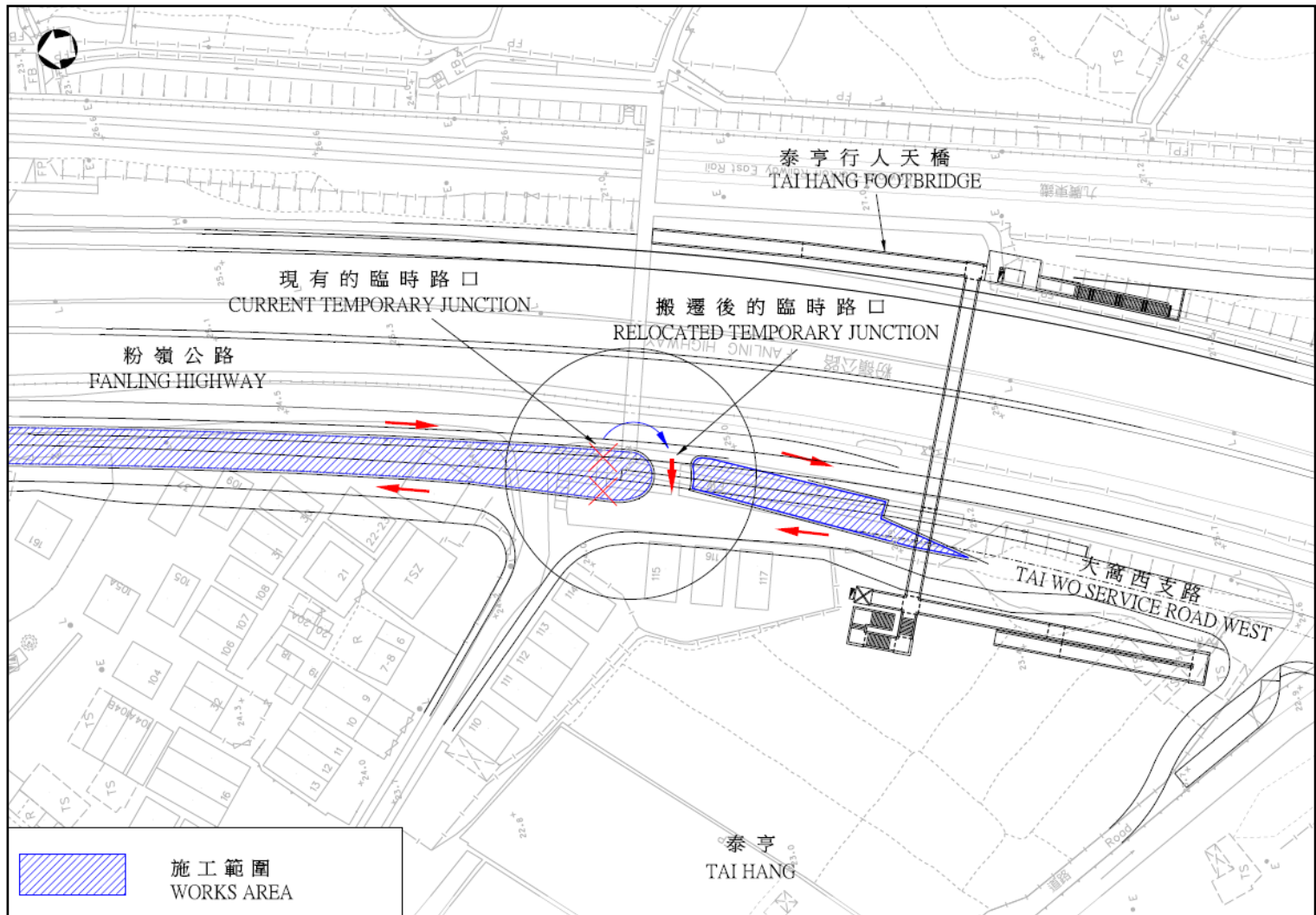
Temporary Traffic Arrangement at Tai Wo Service Road West near Tai Hang Fu Sha Wai

為配合大窩西支路南行和粉嶺公路北行之間的隔音屏障之建造工程，由大窩西支路南行右轉往泰亨灰沙圍的臨時路口將於 2018 年 9 月 3 日起向南遷移約 10 米 (如下圖的圓圈區域所示)。

有關地點將設置適當的臨時交通輔助設施，駕駛人士請遵照現場指示，並小心駕駛。我們為此工程將造成的不便之處，謹此致歉。

To facilitate construction of noise barriers between Tai Wo Service Road West southbound and Fanling Highway northbound, the temporary road junction for right turning from Tai Wo Service Road West to Tai Hang Fu Sha Wai will be further relocated approximately 10 metres southwards on 3 September 2018 (as shown in circled area of the figure below).

Appropriate temporary traffic aids will be erected on site. Motorists are advised to follow the instructions on site and drive in utmost care. We are sorry for any inconvenience caused by the construction works.



路政署將密切留意交通情況並採取必要措施，務求將交通影響減至最低。如對上述交通安排有任何查詢，請致電二十四小時熱線：8208 2230。

Highways Department will closely monitor the traffic conditions and implement any necessary measures to ensure the traffic impacts are kept to a minimum. Should you have any enquiries, please call the 24-hour hotline: 8208 2230.