

大窩西支路 24 小時單線雙程臨時交通管制措施

24 Hours One Lane Two Ways Temporary Traffic Arrangement at Tai Wo Service Road West

為配合大窩西支路的道路維修工程，位於龍珊花苑出入口附近的一段大窩西支路路段將於 2018 年 7 月 9 日至 8 月底分階段實施 24 小時單線雙程的臨時交通管制措施。

現場會設置適當的臨時交通標誌指示各道路使用者，駕駛人士請遵照現場指示，並小心駕駛。我們為此工程將造成的不便之處，謹此致歉。

有關臨時單線雙程道路詳情如下：

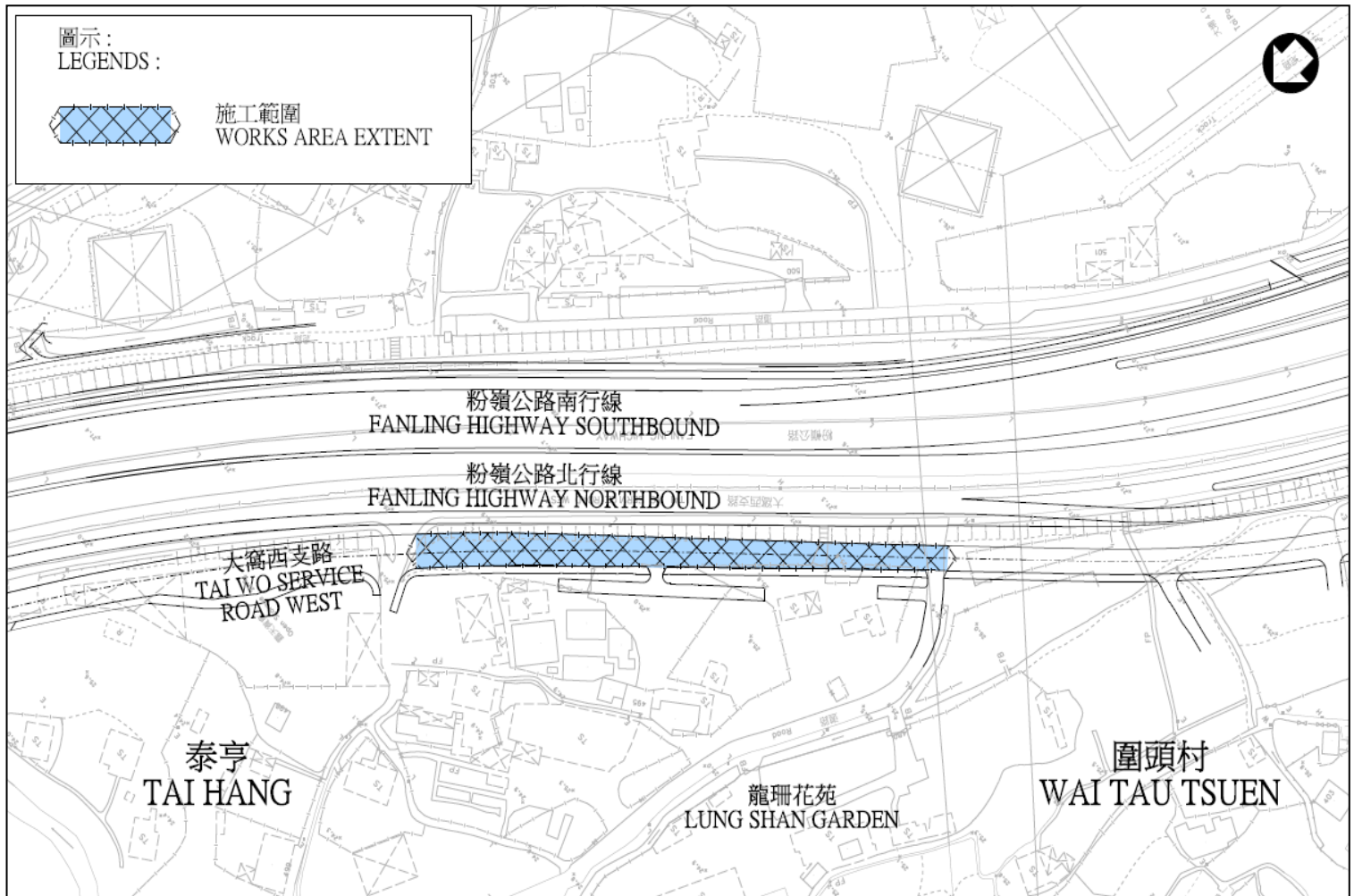
2018 年 7 月 9 日至 8 月底

To facilitate the road repairing works at Tai Wo Service Road West, 24 hours one lane two ways temporary traffic arrangement will be implemented in stages at the section of Tai Wo Service Road West near the junction of Lung Shan Garden from 9 July 2018 to End-August 2018.

Appropriate temporary traffic aids will be erected on site. Motorists are advised to follow the instructions on site and drive in utmost care. We are sorry for any inconvenience caused due to the construction works.

Please see below details the temporary one lane two ways traffic :

9 July 2018 to End-August 2018.



路政署將密切留意交通情況並採取必要措施，務求將交通影響減至最低。如對上述交通安排有任何查詢，請致電二十四小時熱線：8208 2230。

Highways Department will closely monitor the traffic conditions and implement any necessary measures to ensure the traffic impacts are kept to a minimum. Should you have any enquiries, please call the 24-hour hotline: 8208 2230.