

重新定線之大窩西支路(泰亨段)將於 2017 年 5 月 16 日通車

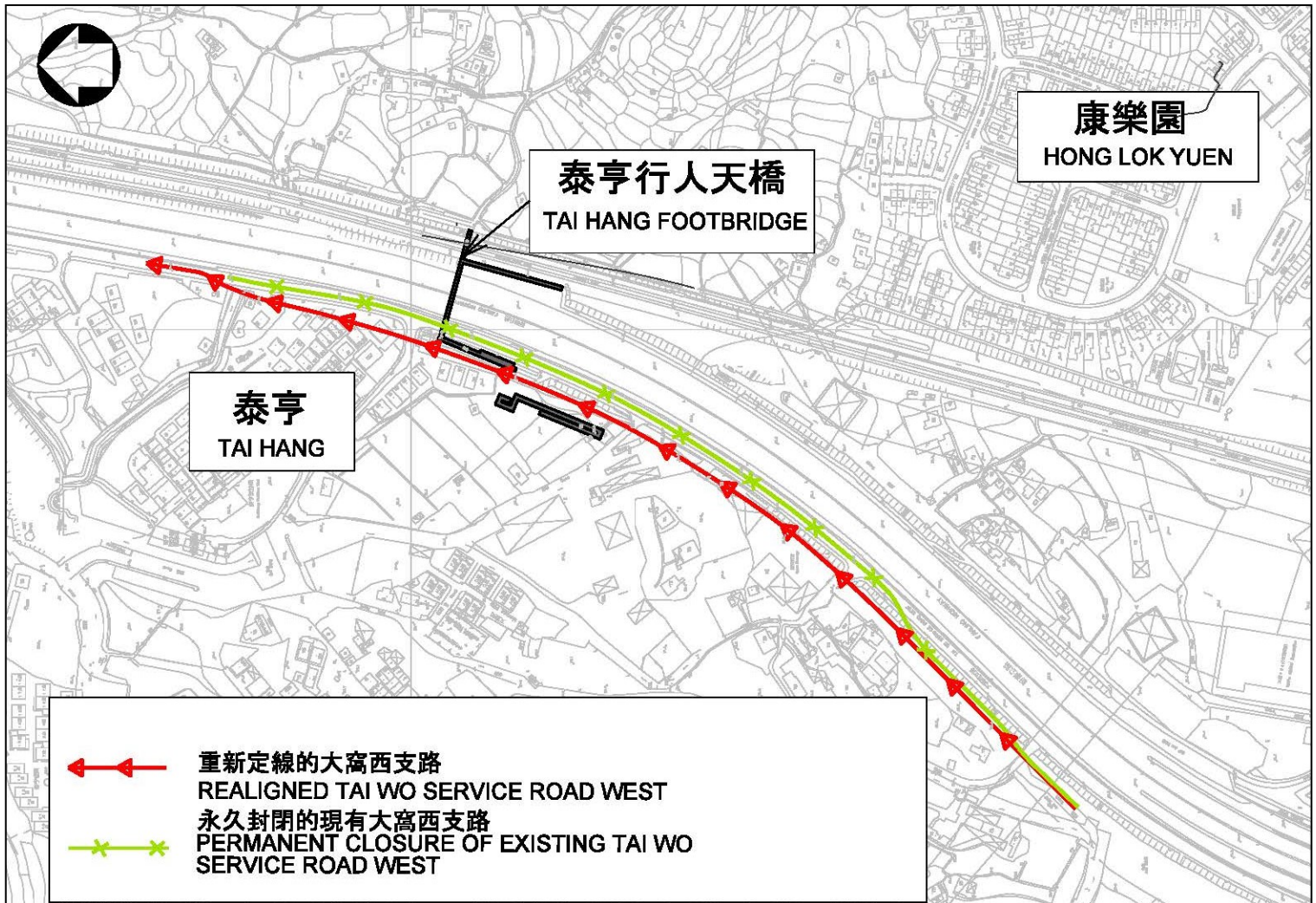
To Commission the Realigned Tai Wo Service Road West (Tai Hang Section) on 16 May 2017

粉嶺公路擴闊工程合約編號 HY/2012/06 的重新定線之大窩西支路(泰亨至南華莆段)將於 2017 年 5 月分階段通車，而現有的大窩西支路亦將會分階段永久封閉。而首階段之泰亨段將於 2017 年 5 月 16 日通車(見下圖)。

重新定線之大窩西支路在通車後，承建商仍需要間歇性在重新定線之大窩西支路實施單線雙程的臨時交通措施，以完成在重新定線之大窩西支路上餘下的保養工程。現場將會設有交通標誌指示駕駛者，請各駕駛者留意現場交通安排。

The realigned Tai Wo Service Road West (Section between Tai Hang and Nam Wa Po) being constructed under Fanling Highway Widening Contract No. HY/2012/06 will be commissioned by stages. The existing Tai Wo Service Road West will also be permanently closed by stages. The first stage of commissioning would be Tai Hang Section which would be commissioned on 16 May 2017 (See the figure below).

After commissioning of the realigned Tai Wo Service Road West, the Contractor will still need to implement temporary traffic arrangements of one lane two way traffic flow on the realigned Tai Wo Service Road West intermittently in order to complete the remaining maintenance works. Temporary traffic signs will be erected to guide the road users as to the temporary traffic arrangements.



路政署將密切留意交通情況並採取必要措施，務求將交通影響減至最低。如對上述交通安排有任何查詢，請致電二十四小時熱線：8208 2230。

Highways Department will closely monitor the traffic conditions and implement any necessary measures to ensure the traffic impacts are kept to a minimum. Should you have any enquiries, please call the 24-hour hotline: 8208 2230.